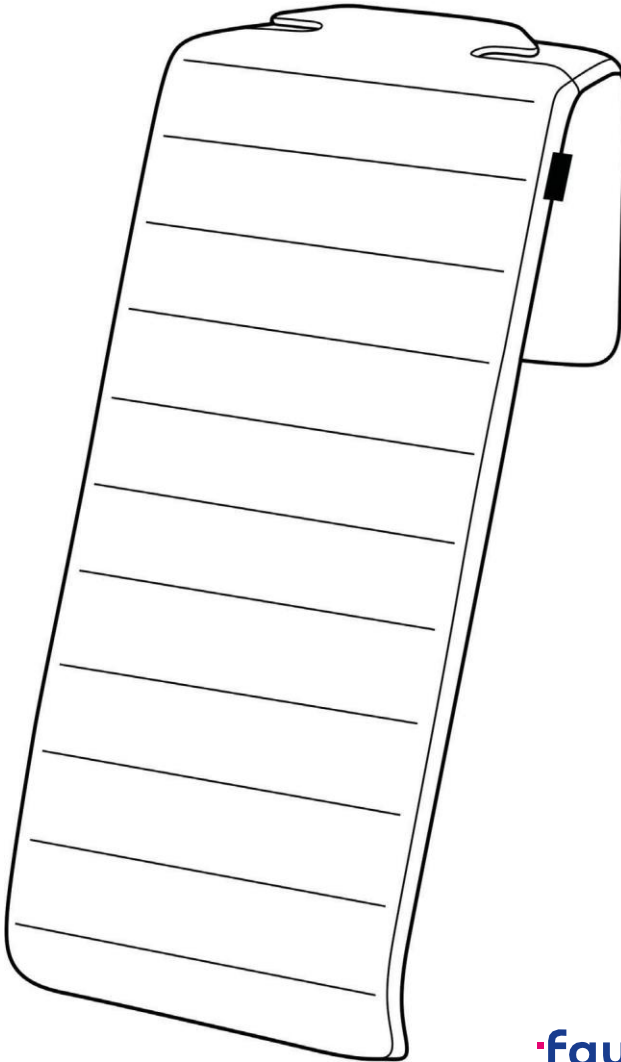


Smart Massage Cover

User Manual



User Manual

Smart Massage Cover

Product number **9001778136954**

1. General



Please read and keep the user manual

This user manual applies to this Smart Massage Cover (hereinafter referred to only as the “massage cover”). The user manual contains important information on putting it into operation and handling.

Read the user manual carefully, especially the safety instructions, before using this product. Failure to follow these instructions can result in serious injury or damage to the holder.

Keep the user manual for further use. If you give the massage cover to someone else, please be sure to include the user manual.

2. Explanation of warning symbols and notes

The following symbols and signal words are used in this user manual.



Danger

This signal symbol/word indicates a danger with a high degree of risk which, if not avoided, could result in death or serious injury.



Warning

This signal symbol/word indicates a hazard with a medium level of risk which, if not avoided, could result in death or serious injury.



Note

This signal word warns of possible damage to property.



Read the user manual



Do not insert needles



Protection class III device



May not be used by very young children (0-3 years).



Do not use folded or in collapsed state.



Do not wash



Do not bleach



Do not tumble dry



Do not iron



Do not dry clean

3. Security

3.1 Intended use

The massage cover is used for a relaxation massage in the back region. It can be used in both the car and in dry indoor spaces. It is intended for private use only and is not suited for commercial, therapeutic or hospital use.

Only use the massage cover as instructed in this user manual. Only use the 12 V plug and the 230 V mains plug supplied with the product. Any other use is considered improper and could cause property damage or even personal injury. The massage cover is not a child's toy. The manufacturer or dealer accepts no liability for damage caused by improper use.

3.2 Safety instructions



Danger
Danger to life!

Incorrect attachment of the massage cover can prevent / interfere with the deployment of the seat airbag in the event of a collision.

- Only use the massage cover in such a way that the seat airbag is not covered or impaired. If you have any questions about the seat airbag, read the manual for your vehicle or ask your workshop.
 - Be sure to follow these instructions when attaching the massage cover.
 - Reposition a displaced massage cover. If this is no longer possible due to deformation or advanced wear, remove the massage cover.
-



Danger
Danger to life!

Incorrect attachment of the massage cover can prevent / interfere with the deployment of the seat airbag in the event of a collision.

- Don't operate the massage cover while you are driving. You could be distracted and this could endanger your traffic safety. If you want to change the settings, stop to do so.



Warning
Risk of electric shock!

Faulty electrical installations or excessive mains voltage can lead to an electric shock.

- Connect the massage cover only to a 12 V on-board power socket in a car (cigarette lighter) or a mains socket.
- Make sure the 12 V on-board power supply socket is always easily accessible so that you can quickly disconnect the connection cable from the power supply in the event of a fault.
- Do not operate the massage cover if it shows visible damage or if the connection cable or 12 V plug or 230 V power plug are defective.
- If the connection cable of the massage cover is damaged, it has to be replaced by the manufacturer or their customer service or a similarly qualified person in order to avoid hazards.



- Do not open the massage cover, but rather leave repairs to experts. Contact a specialized workshop for this purpose. Liability and warranty claims are excluded in the event of repairs carried out independently, improper connection or incorrect operation.
- Only parts that correspond to the original device data may be used for repairs.
- The massage cover contains electrical and mechanical parts that are vital to protection against sources of danger.
- Do not immerse the product, connection cable or plug into water or other liquids. Never touch the 12 V plug or 230 V mains plug with wet hands.
- Never pull the 12 V plug or 230 V mains plug out of the socket by the connection cable, always grasp it directly.
- Never use the connection cable as a carrying handle.
- Do not kink the connection cable and do not lay it over sharp edges.
- Only use the massage cover inside vehicles or dry indoor areas. Never operate it in the rain.
- Ensure that children do not insert any objects into the massage cover.
- When you are not using the massage cover, cleaning it or if a malfunction occurs, always switch the massage cover off and disconnect the 12 V plug or mains plug from the socket.

**Danger of damage!**

Improper handling of the massage cover can damage the product.

- Do not use blankets, pillows or covers on the massage cover.
- Never expose the massage cover to high temperature (heating, etc.) or weather conditions (rain, etc.).
- Never immerse it in water for cleaning or use steam cleaners for cleaning.
- Do not use the massage cover if it is cracked, split or deformed.
- Replace damaged components only with suitable original spare parts.
- Do not insert needles or sharp objects into the massage cover.
- Do not operate the massage cover near heat sources, open flames such as candles or in direct sunlight to avoid overheating.
- During operation, make sure the 12 V plug or power plug is firmly inserted into the socket and that it is free from dirt. If there is insufficient contact between the plug and the socket, the vehicle vibrations can cause the power supply to switch on and off at short intervals. This can lead to overheating.
- Do not switch the massage cover on when it is folded or collapsed.
Do not place heavy objects such as suitcases on the massage cover.

4. Check massage cover and scope of delivery



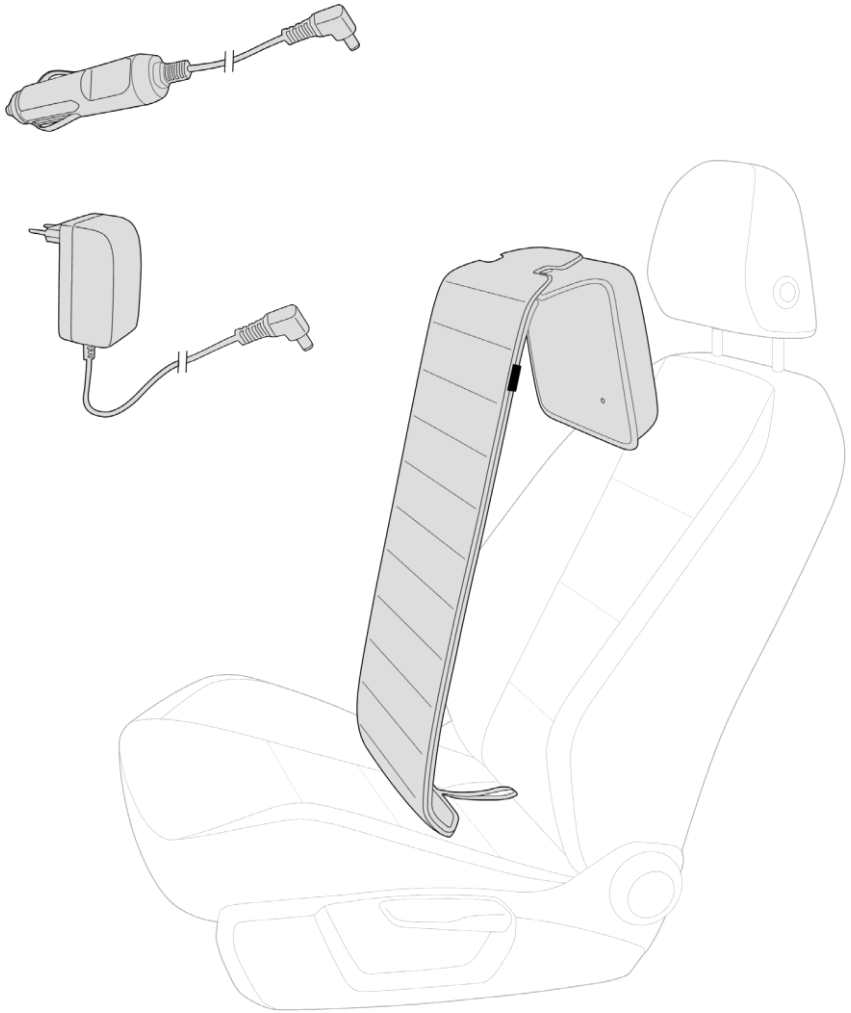
Danger of damage!

If you open the packaging carelessly with a sharp knife or other pointed objects, the massage cover can be damaged.

Therefore, be very careful when opening it.

1. Take the massage cover out of the packaging and check whether it or the individual parts are damaged. If this is the case, do not use the massage cover. Contact the manufacturer.
2. Check whether the scope of delivery is complete [see following figure].

Scope of delivery:



5. Usage



Warning

Risk of injury!

Improper handling of the massage cover can cause injuries and damage to the massage cover.

- Before putting it to use, make sure the plug and the connection cable are dry.
- Switch the massage cover off immediately if you feel pain.
- Do not bend or fold the massage cover and keep it away from water and other liquids.
- Do not use the massage cover near open flames or other heat sources such as strong sunlight.
- Check the massage cover regularly for wear and damage. If such signs are present, the massage cover has been used improperly or no longer functions, do not use it.

5.1 Attaching the massage cover



Danger

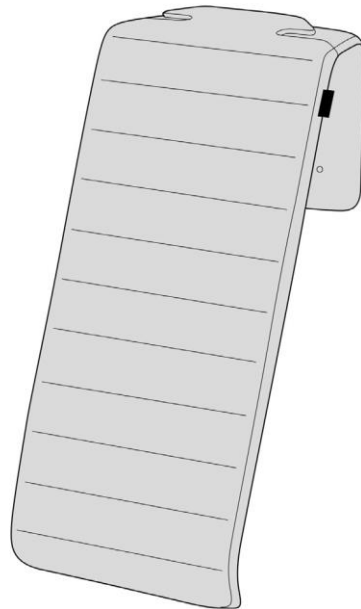
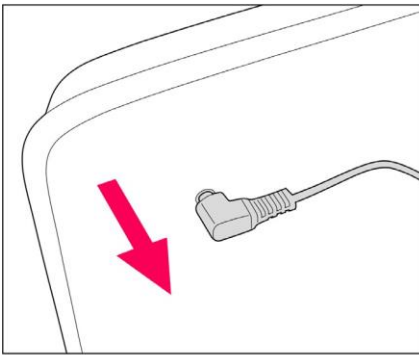
Danger to life!

Incorrect attachment of the massage cover can prevent / interfere with the deployment of the seat airbag in the event of a collision.

- Only use the massage cover in such a way that the seat airbag is not covered or impaired. If you have any questions about the seat airbag, read the manual for your vehicle or ask your workshop.
- Be sure to follow these operating instructions when attaching the massage cover.
- Reposition the displaced massage cover. If this is no longer possible due to deformation or advanced wear, remove the massage cover.

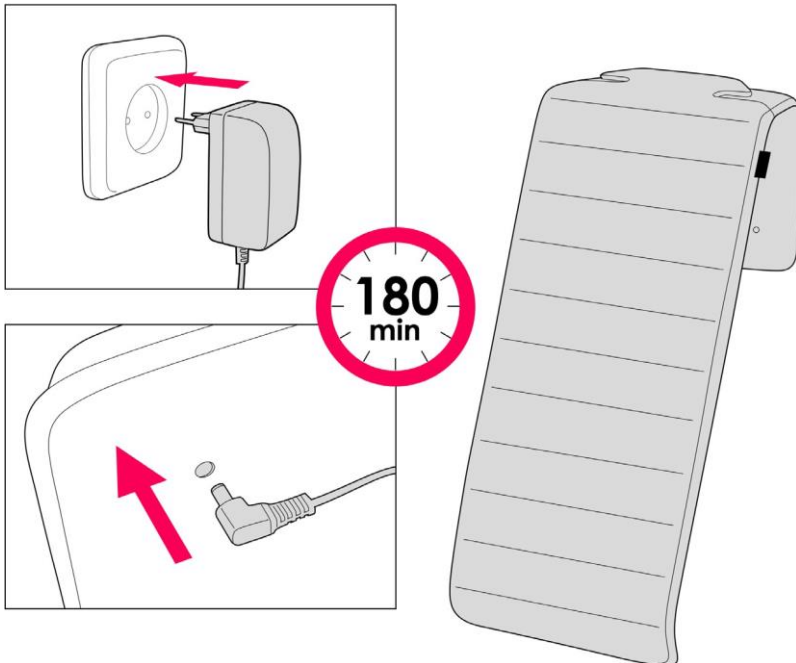
Initial commissioning:

1. Remove the connector from the charging socket of the massage cover.



2. Plug the power supply into the power socket first and then into the charging socket of the massage cover. Leave the massage cover connected to the power supply until it is fully charged (approx. 3 hours).

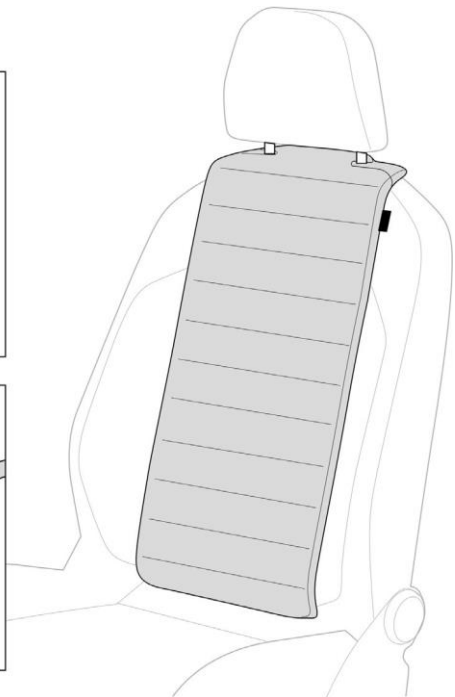
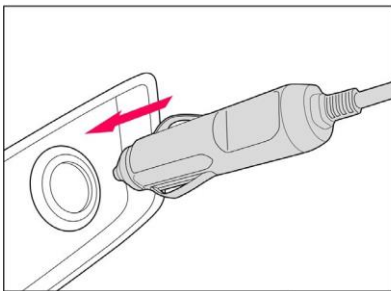
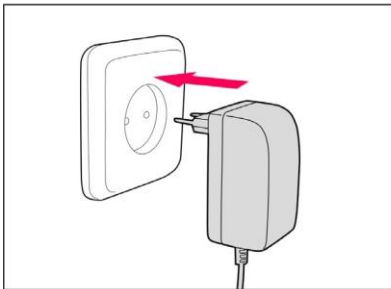
Please note: the connection to the charging socket must be fast. Otherwise, a massage will start.



5.2 Charging the massage cover

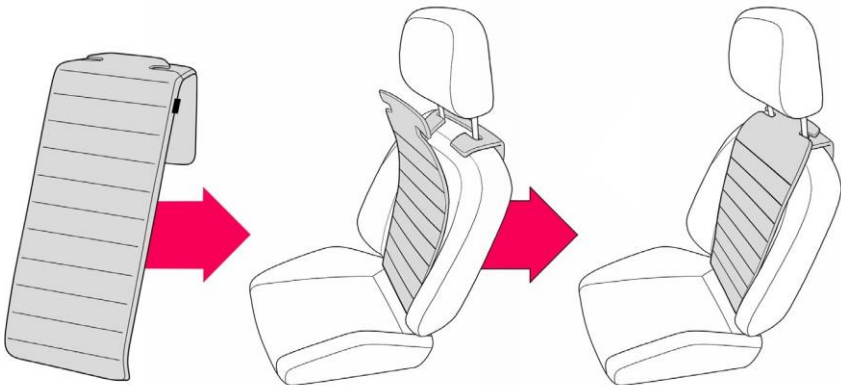
To charge the massage cover, use the plug-in power supply it comes with. To charge the massage cover in the car, use the supplied charging cable for the cigarette lighter. The external power supply should be plugged into the car or a power outlet, then connect the charging socket of the massage cover.

The massage cover can be charged and made ready to use via app. To end the charging mode, you can simply unplug the charger.



5.3 Using the massage cover in the car

1. Plug the connection cable (c) into the connection socket (g) of the massage cover.
2. Place the massage cover (a) on the car seat.
3. Be sure to check that the massage cover does not cover any airbag and thus obstruct it.
4. Attach the massage cover to the bars of the headrest.
5. Pull the lower tab (b) through between the seat backrest and the seat surface.
6. Make sure the connection cable (c) is not pinched anywhere.
7. Insert the 12 V plug (d) into the 12 V on-board power socket.
8. Only use the massage cover when the engine is running to avoid discharging the vehicle battery.



5.4 Use massage cover in the interior

1. Plug the connection cable (f) into the connection socket (g) of the massage cover.
2. Place the massage cover (a) on a suitable chair or armchair.
3. Make sure the connection cable (f) is not pinched anywhere.
4. Insert the 230 V mains plug into the socket.

The massage cover is not connected to the charging plug or connected to the charging plug and it is connected to the external power connector. Operation takes place via the app. The battery discharges within a few days even when it is not used.

App now available for iOS and Android.

Download the SMC app to your cell phone at www.faurecia.de/smart-massage-cover. Find the Bluetooth ID of the massage cover and connect your mobile device. The Bluetooth identifier can be found on the nameplate of the massage cover and starts with “Faurecia SMC XXXX.” Select a massage program using the app. Adjust the speed and intensity via the app. The last settings will be stored in the massage cover when the app is closed. The last massage program will be automatically activated for 15 min. when the charging cable is plugged in again (if there is no connection to the app).



5.5 Install app

Two options:

1. Scan the QR code on the flap of the product (located on the backside). This will take you directly to the Smart Massage Cover website (<https://www.faurecia.de/smart-massage-cover>), from where you will be easily redirected to the respective app store (click on the respective icon).



2. It can be found directly in the app store under the name: "Faurecia Smart Massage Cover" with the following app icon.



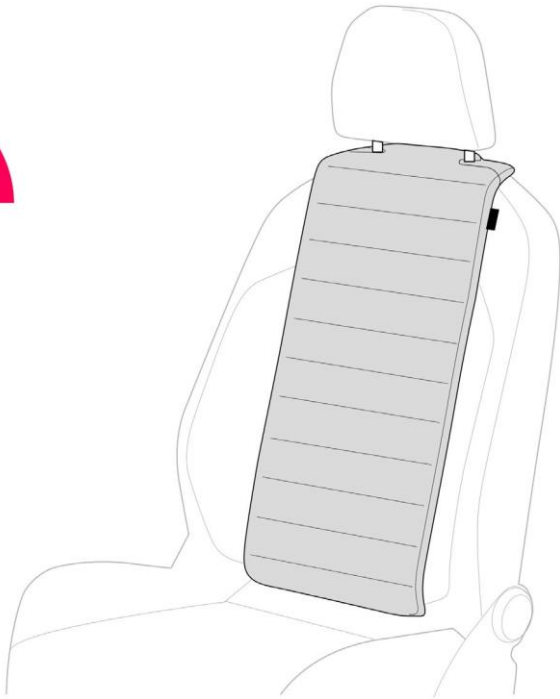
5.6 Operate the message cover and select the program

Scan the QR code on the flap of the product (located on the backside). This will take you directly to the Smart Massage Cover website (alternatively, enter the following link: <https://www.faurecia.de/smart-massage-cover>). Here you will find a detailed tutorial on how to start up the app and Smart Massage Cover, as well as the options offered by the app.

5.7 Operation without the app

The massage cover should be connected to the charging plug and only then be connected to the external power supply. The massage cover starts with the last massage program used. The connection via app is also possible. After 15 minutes, the massage will end and the battery will continue to charge.

App now available for iOS and Android.



6. Cleaning



Note

Danger of short circuit!

Water that has penetrated the massage cover can cause a short circuit.

- Never immerse the massage cover in water.
- Make sure that no water gets into the massage cover.



Note

Danger of short circuit!

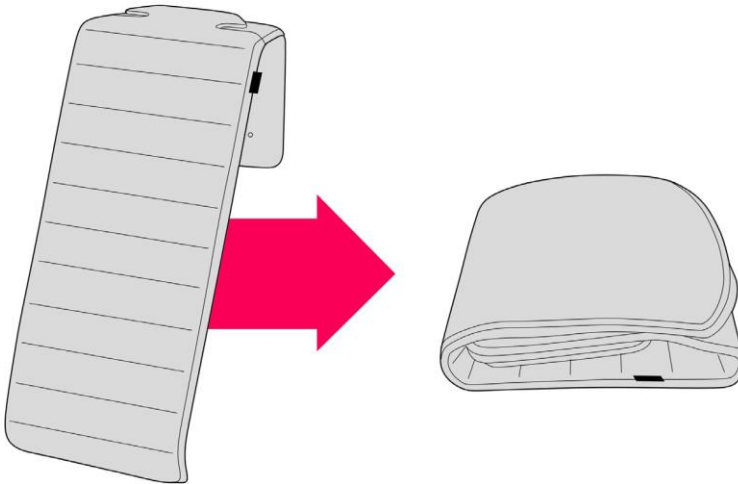
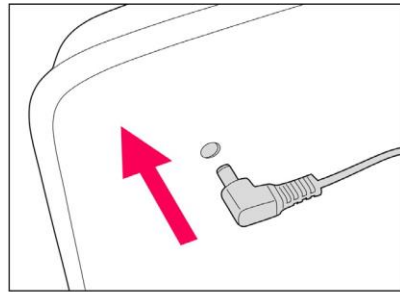
Improper handling of the massage cover can cause damage.

- Do not use aggressive cleaning agents, brushes with metal or nylon bristles, or sharp or metallic cleaning objects such as knives, hard spatulas and the like. These can damage the surfaces.
- Do not put the massage cover in the washing machine under any circumstances.

1. Disconnect the plug from the socket before cleaning.
2. Wipe the massage cover with a slightly damp cloth.
3. Allow all parts to dry completely afterwards.

7. Storage

- Store the massage cover in a clean and dry place.
- Keep the massage cover out of reach of children.
- Avoid bending the massage cover during storage by placing heavy objects on it.
- Do not weigh down the massage cover with heavy objects.



8. Troubleshooting

A complete disconnection from the external power supply triggers a reset. This usually eliminates any functional restrictions that could occur.

9. Technical data

Power:	max 25W
Voltage:	12 V
Protection class:	III
Battery power:	26000mAh

10. Declaration of Conformity

The EU declaration of conformity can be requested from the manufacturer.



11. Disposal

Old devices may not be disposed of in household waste!

According to European Directive 2012/19/EU, used electrical products must be recycled in an environmentally sound manner.

Do not dispose of rechargeable batteries in household waste.



Note

The integrated lithium-ion battery of this device cannot be removed for disposal.

- The integrated lithium-ion battery of this device cannot be removed for disposal.
- The integrated lithium-ion battery may only be removed by qualified personnel. To remove the lithium-ion battery from the massage cover, the battery must be empty and the upper cover of the massage cover must be opened.
- Defective or used batteries must be recycled in accordance with Directive 2006/66/EC. Return the massage cover via the collection facilities offered. For information on disposal options for discarded electrical products and rechargeable batteries, please contact your local or municipal authority.

12. Manufacturer

Faurecia Autositze GmbH
Garbsener Landstraße 7
30419 Hannover, Germany

Dear Customer,

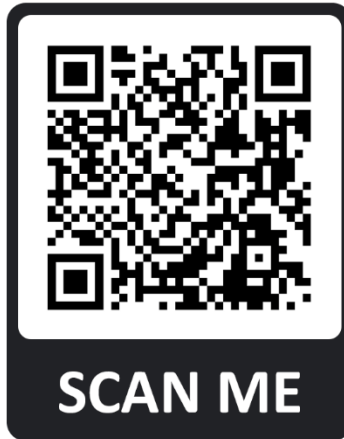
Thank you for choosing our product.

Before you embark on your first soothing journey with the Smart Massage Cover, please follow just a few steps. Read the instructions carefully.

Download the Smart Massage Cover app for your smartphone. You can find the download links on our website at www.faurecia.de/smart-massage-cover, or scan the QR code shown on the backside. You can also find explanatory videos on initial use and other useful information about our product on our website.

Your Faurecia Team

We wish you much pleasure and relaxing moments



We would be happy to receive your feedback. Please use the following address:
endkunde@faurecia.com